



**aurora**sofa  
MADE IN ITALY

COLLECTION  
*inspired and* MADE IN ITALY

# COLORI E TESSUTI COLORS AND FABRICS

**+200**  
**COLORS**  
**FABRICS &**  
**LEATHERS**

## GRANDE VARIETÀ COLORI E MATERIALI

I rivestimenti di ogni modello sono disponibili in numerose varianti di colore e materiale: tessuti, tessuti anti macchia, microfibre, pelli ed eco-pelli.

## GREAT MATERIAL AND COLOR VARIETY

The upholstery of each model is available in a vast array of colors and materials: fabric, stain-resistant fabric, microfiber, leather and eco leather.

## GROSSE MATERIAL UND FARBVIELFALT

Die Bezüge der einzelnen Modelle sind in vielen verschiedenen Farben und Materialien wie Textilien, schmutzabweisenden Textilien, Mikrofaser, Leder und Kunstleder erhältlich.

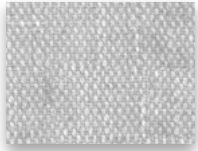
## БОЛЬШОЕ РАЗНООБРАЗИЕ ЦВЕТА

Обивка каждой модели доступна в различных вариантах цветов и материалов: ткань, микрофибра, кожа, искусственная кожа.



**aurora**sofa  
MADE IN ITALY

# COMPOSIZIONE TESSUTI ED INDICAZIONI DI LAVAGGIO FABRICS COMPOSITION AND CLEANING INSTRUCTIONS



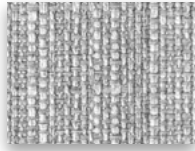
**AROMA** cat.A

Comp.: 42%pl 40%co  
18%pc  
Peso/weight: 330g/mq  
Martindale:  
20.000 cicli /rubs



**AROMA FIORE** cat.A

Comp.: 42%pl 40%co  
18%pc  
Peso/weight: 330g/mq  
Martindale:  
20.000 cicli /rubs

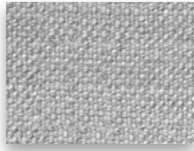


**ASPRO** cat.A

Comp.: 100%pl  
Peso/weight: 520g/mq  
Martindale:  
28.300 cicli /rubs



"IDROREPELENTE"  
"WATER-REPELLENT"



**FILO** cat.A

Comp.: 100%co  
Peso/weight: 520g/ml  
Martindale:  
25.000 cicli /rubs

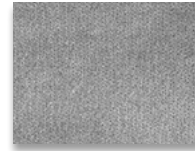


**MITE** cat.A

Comp.: 100%pl  
Peso/weight: 480g/ml  
Martindale:  
>100.000 cicli /rubs



"IDROREPELENTE"  
"WATER-REPELLENT"



**SERENO** cat.A

Comp.: 100%pl  
Peso/weight: 490g/mq  
Martindale:  
25.000 cicli /rubs



"IDROREPELENTE"  
"WATER-REPELLENT"



**SOAVE** cat.A

Comp.: 100%pl  
Peso/weight: 350g/mq  
Martindale:  
25.000 cicli /rubs

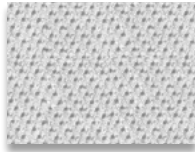


**NABUCCO** cat.B

Comp.: 80%pl 20%co  
Peso/weight: 580g/ml  
Martindale:  
>20.000 cicli /rubs



"IDROREPELENTE"  
"WATER-REPELLENT"



**NIDO** cat.B

Comp.: 86%pl 14%pa  
Peso/weight: 490g/mq  
Martindale:  
>30.000 cicli /rubs

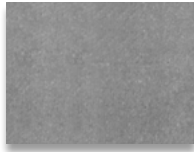


"IDROREPELENTE"  
"WATER-REPELLENT"



**ORMA** cat.B

Comp.: 50%pu  
32,55pl 17,5%co  
Peso/weight: 630g/ml  
Martindale:  
100.000 cicli /rubs

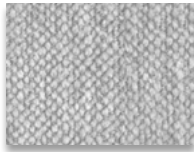


**VELLO** cat.B

Comp.: 59%co 41%vi  
Peso/weight: 700g/ml  
Martindale:  
>25.000 cicli /rubs



"STONE WASHED"



**DOLCE** cat.C

Comp.: 59%co 41%vi  
Peso/weight: 700g/ml  
Martindale:  
>25.000 cicli /rubs



"STONE-WASHED"



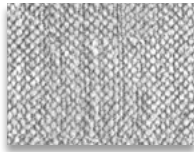
**MALIA** cat.C

Comp.: 100%co  
Peso/weight: 520g/ml  
Martindale:  
25.000 cicli /rubs



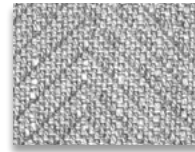
**PURO** cat.C

Comp.: 72%vi 28%li  
Peso/weight: 690g/ml  
Martindale:  
23.000 cicli /rubs



**TRACCE** cat.C

Comp.: 45%co 30%vi  
16%li 9%pc  
Peso/weight: 620g/mq  
Martindale:  
>20.000 cicli /rubs

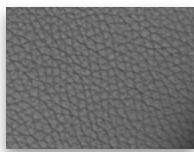


**TRACCE SPIGA** cat.C

Comp.: 45%co 30%vi  
16%li 9%pc  
Peso/weight: 620g/mq  
Martindale:  
>20.000 cicli /rubs

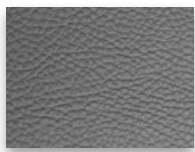


## DESCRIZIONE PELLI LEATHERS DESCRIPTION



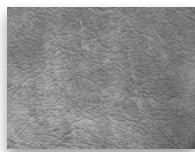
**EVOLUTION**  
cat. AL

Spessore/ Thickness: 1,0 mm +/-  
Rifinitone in soluzione  
acquosa/ Finishing  
in aqueous solution  
Ignifugo/ Fire resistant  
UNI EN 1021/1 e UNI EN  
1021/2



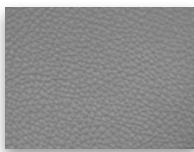
**GHIBLI**  
cat. BL

Spessore/ Thickness:  
1,4/1,5 mm  
Rifinitone in soluzione  
acquosa/ Finishing  
in aqueous solution  
Ignifugo/ Fire resistant  
UNI EN 1021/1 e UNI EN  
1021/2



**OLD**  
cat. CL

Spessore/ Thickness:  
1,0 mm +/-  
Rifinitone in soluzione  
acquosa/ Finishing  
in aqueous solution  
Ignifugo/ Fire resistant  
UNI EN 1021/1 e UNI EN  
1021/2



**SUAVE**  
cat. DL

Spessore/ Thickness:  
1,2/1,3 mm  
Rifinitone in soluzione  
acquosa/ Finishing  
in aqueous solution  
Ignifugo/ Fire resistant  
UNI EN 1021/1 e UNI EN  
1021/2

Le illustrazioni hanno valore indicativo. Aurora S.r.l. si riserva il diritto di apportare eventuali modifiche per migliorare i propri prodotti.

The illustrations are indicative. Aurora S.r.l. reserves the right to make any changes to improve their products.

Die Illustrationen vermitteln Richtwerte. Die Aurora S.r.l. behält sich das Recht eventueller Änderungen vor, um ihre Produkte zu verbessern.

Иллюстрации являются примером. Aurora s.r.l. оставляет за собой право вносить изменения с целью улучшения собственной продукции.

TESSUTI CATEGORIA A / FABRICS CATEGORY A

 AROMA 01	 AROMA FIORE 01	 AROMA 04	 AROMA FIORE 04	 AROMA 03	 AROMA FIORE 03
 ASPRO 09	 ASPRO 01	 ASPRO 08	 ASPRO 02	 ASPRO 03	 ASPRO 04
 FILO 08	 FILO 01	 FILO 09	 FILO 02	 FILO 03	 FILO 12
 MITE 01	 MITE 02	 MITE 06	 MITE 10	 MITE 12	 MITE 03
 SERENO 1	 SERENO 2	 SERENO 3	 SERENO 4	 SERENO 5	 SERENO 6
 SOAVE 01	 SOAVE 08	 SOAVE 04	 SOAVE 05	 SOAVE 12	 SOAVE 11

TESSUTI CAT. B / FABRICS CAT. B

 NABUCCO 11	 NABUCCO 12	 NABUCCO 08	 NABUCCO 03	 NABUCCO 10	 NABUCCO 05
 NIDO 01	 NIDO 08	 NIDO 02	 NIDO 03	 NIDO 10	 NIDO 09
 ORMA 01	 ORMA 02	 ORMA 09	 ORMA 03	 ORMA 11	 ORMA 04
 VELLO 01	 VELLO 07	 VELLO 12	 VELLO 10	 VELLO 09	 VELLO 03

TESSUTI CAT. C / FABRICS CAT. C

 DOLCE 04	 DOLCE 05	 DOLCE 07	 DOLCE 08	 DOLCE 01	 DOLCE 06
 MALIA 11	 MALIA 04	 MALIA 02	 MALIA 06	 MALIA 08	 MALIA 07
 PURO 02	 PURO 01	 PURO 03	 PURO 04	 PURO 06	 PURO 11
 TRACCE 06	 TRACCE SPIGA 06	 TRACCE 03	 TRACCE SPIGA 03	 TRACCE 01	 TRACCE SPIGA 01



TESSUTI CATEGORIA **A** / FABRICS CATEGORY **A**

TESSUTI CAT. **B** / FABRICS CAT. **B**

TESSUTI CAT. **C** / FABRICS CAT. **C**

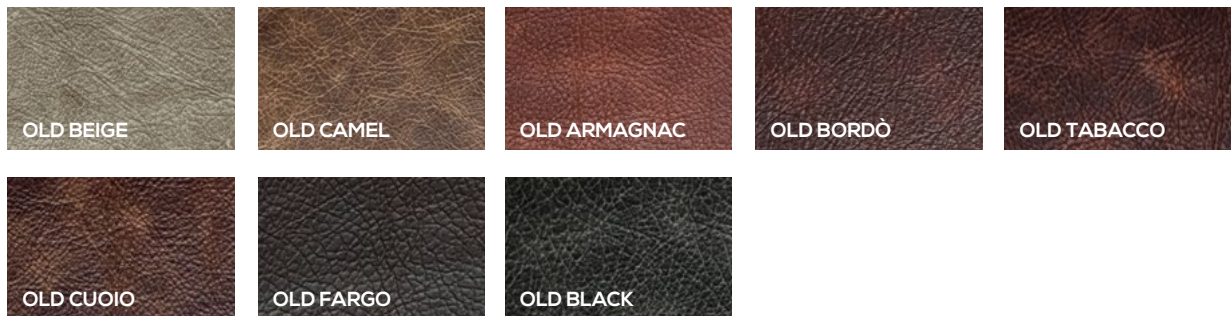
PELLI CAT. AL / LEATHERS CAT. AL



PELLI CAT. BL / LEATHERS CAT. BL



CAT. CL / CAT. CL

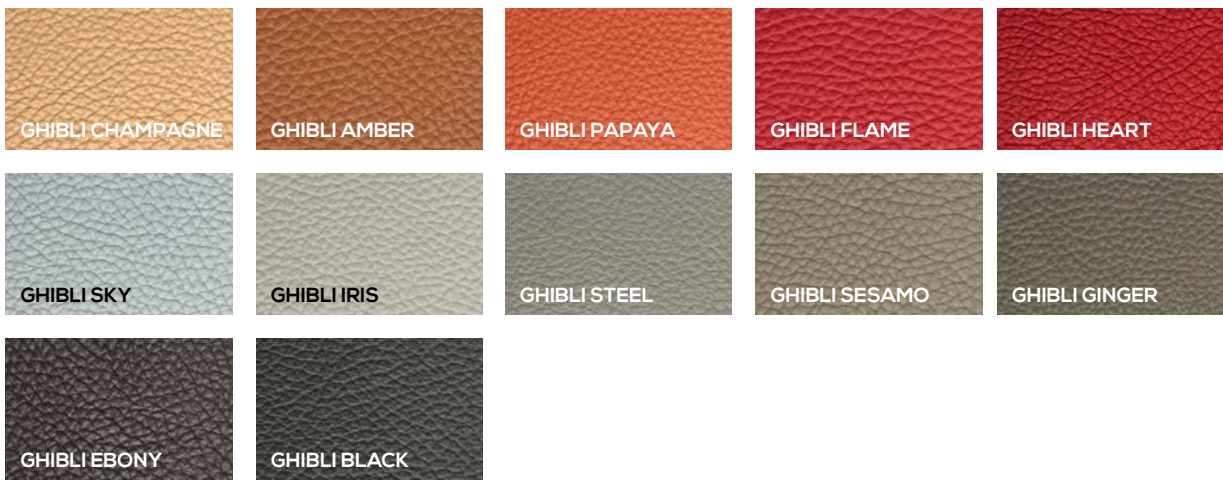


CAT. DL / CAT. DL





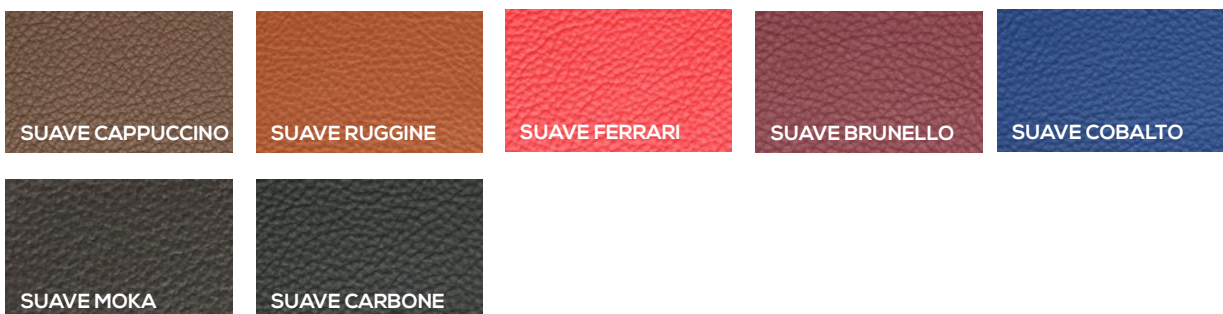
PELLI CAT. AL / LEATHERS CAT. AL



PELLI CAT. BL / LEATHERS CAT. BL



CAT. CL / CAT. CL



CAT. DL / CAT. DL



Aurora s.r.l.  
Via Gramadora 2-4,  
47122 Forlì (FC) ITALY  
T. +39 0543 551421  
F. +39 0543 64507  
info@aurorasofa.com  
www.aurorasofa.com